



ONE STOP SOLUTION

With a history that stretches back for more than six decades, Lim Kim Hai Electric is today Singapore's Leading Distributor of Electrical, Control, Lighting, Safety, Industrial & E-Mobility Solutions.

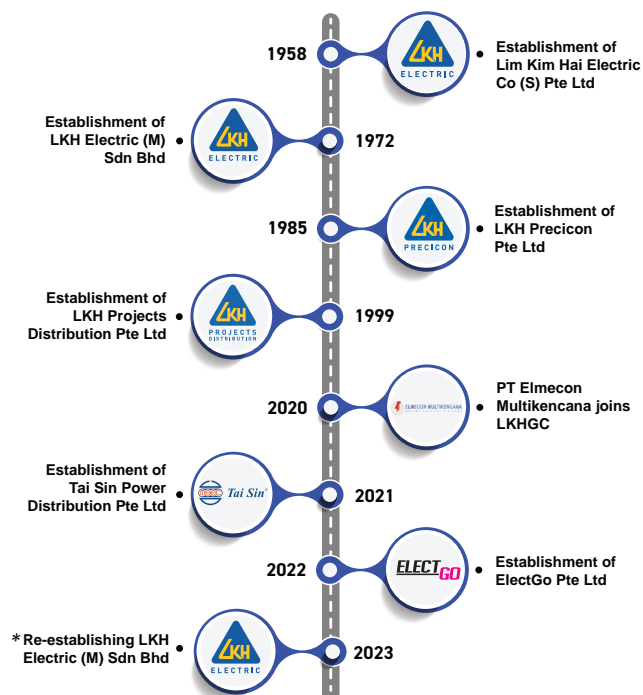
ELECTRICAL | CONTROL | LIGHTING | SAFETY | INDUSTRIAL | EV CHARGING

ABOUT

LIM KIM HAI GROUP OF COMPANIES

Founded in 1958 with humble beginnings as an electrical shop, Lim Kim Hai Group of Companies (LKHGC) is a strategic network of affiliated solutions providers. Each of our companies cover a wide range of products, services, & technologies and leverage on their individual areas of expertise to serve customers. By synergising the different business skill sets with one another, LKHGC is a one-stop electrical solutions provider for the commercial and industrial sector.

While our drive and attention to detail fuels our journey forward, we remain committed to the principles of our founder, Mr. Lim Kim Hai who understood that running a people-first organisation is the key driver behind business growth and sustainability. In real terms, this means empowering employees who work hard to build strong, lasting relationships with customers, suppliers, and business partners. By embedding this mindset into our company culture, we maintain our status as a respected organisation that delivers excellence with integrity.



*LKH Electric (M) is reinstated and re-organised to provide power distribution solutions to Digital Industries in Malaysia.



Lim Kim Hai Electric Co (S) Pte Ltd MRO Products Distribution

Singapore's leading distributor of #electrical, #control, #lighting, #safety, maintenance solution and E-mobility products and accessories. Lim Kim Hai Electric demonstrates strength at every stage of the value chain, from knowledge-based sourcing, to a committed services team, and on-time delivery. #industrial #evcharging

www.limkimhai.com.sg



LKH Precicon Pte Ltd Industrial Automation Solutions

LKH Precicon offers end-to-end solutions to companies in need of industrial #automation, and is a key partner in achieving #Industry4.0 transformation requirements to build smart and connected infrastructures. #connectivity #intelligence #smartmanufacturing #internetofthings

www.precicon.com.sg



LKH Projects Distribution Pte Ltd Project Solutions Provider

Serving the construction project industry, LKHPD is an established solution provider delivering a range of services including #power-distribution, #datacommunications, #lighting, and electrical distribution solutions. #emf #electricaldistributionsystem

www.lkhpdp.com.sg



PT Elmecon Multikencana Industrial Automation Solutions

Founded in 1978, a pioneer of Indonesia's industrial #automation solutions, PT Elmecon leads the way as the primary distributor of internationally certified industrial automation and power distribution solutions. #indonesia4.0 #evcharger #powerdistribution

www.elmecon-mk.com



Tai Sin Power Distribution Pte Ltd Power Distribution Solutions

Tai Sin Power Distribution revolutionizes power distribution in Southeast Asia with #busbartrunkingsystem localized repair, replacement, and quality control tests from Singapore. #manufacturer #powermetering #thermalsensor #singaporequality

www.taisn.com.sg



ElectGo Pte Ltd E-commerce Platform

An E-commerce platform offering a complete range of electrical components from trusted brand partners. ElectGo is synonymous with prompt delivery, excellent service, and reliable products. #b2becommerce #eprocurement #mroproducts #industrialsupply #industrialcomponents

www.electgo.com



LKH Electric (M) Sdn Bhd Power Distribution Solutions

Providing Malaysia's digital industries with a wide range of electrical and #power distribution solutions, LKH Electric (M) was re-established to be the extension of the Lim Kim Hai Group of Companies' presence in Malaysia. #automation #datacommunications #emf

www.limkimhai.com.my



Light Journey Specialist Lighting Department

A team of lighting specialists spread across LKHGC. With a keen interest in the intersection of spatial design and light, Light Journey serves as a technical solutions expert, and the primary intermediary between global lighting manufacturers and the local design & construction industry.

www.lightjourney.com.sg



TABLE OF CONTENTS

- OUR SERVICES..... 5
- ELECTRICAL & CONTROL 6
- ENERGY MONITORING SOLUTIONS..... 8
- LIGHTING 10
- VISUAL SAFETY 12
- WORKPLACE SAFETY 13
- PERSONNEL SAFETY..... 14
- SAFETY SERVICES..... 15
- INDUSTRIAL SOLUTIONS..... 16
- E-MOBILITY SOLUTION..... 18
- NETWORK & PARTNERS..... 20



OUR SERVICES

With strong expertise and experience, we are poised to serve all industries locally with confidence and commitment.



PRODUCTS DISTRIBUTION

As the leading electrical material distributor in the market for more than six decades, customer satisfaction is always our top priority. We carry an inventory of more than 20,000 SKUs to support our customers with shortest lead time.



SOURCING & PROCUREMENT

We provide product sourcing & procurement support. With our extensive network in the industry, we are able to source the best fit products with manufacturers offering the best price options in supporting your needs.



INVENTORY MANAGEMENT

We support our customer by providing inventory management for committed orders based on mutual agreements. We keep stocks of critical parts and dispatch according to customers' project schedules.

VALUE ADDED SERVICES

In order to serve our customer better, we offer the following added services but not limited to:



LIGHTING SERVICES

We provide lighting design, installation & retrofitting, testing & commissioning services for all buildings, offices and facilities projects.



EVC SERVICES

We provide electric vehicle charger (EVC) services, including on-site consultation, installation, testing, commissioning, and maintenance.



PLC CONVERSION

We provide programmable logic controller (PLC) conversion services including programming, testing and commissioning the PLC to new system.



ELECTRICAL & CONTROL

3M

ABB

biméd

CCC
CABLE TERMINATIONS

EATON
B-Line series

EATON
Bussmann series

EATON
CEAG products

EATON
Crouse-Hinds series

Electrix
INTERNATIONAL LTD.

FIMER

FLUKE

Fuji Electric

GEWISS

HAWKE
International

Honeywell

IDEC

Kraus & Naimer
BLUE LINE switchgear

legrand®

INDUSTRIAL CONTROL PRODUCTS

Pilot Light, Push Button & Signalling

Industrial Ethernet Switches

- Selector Switches
- Cam Switches

Beacons and Sirens

- Signal Beacons
- Alarm and Sirens
- Human Machine Interfaces (HMI)

Timers and Relays

- Relays
- Timers
- Smart Relays

Power Supply Units

Control Stations

- Customised Control Stations

Contactors

Logic and Control

- Programmable Logic Controller (PLC)

Sensors (Detection)

- Limit Switches
- Safety Curtain Sensors
- Vision Sensors
- PowerTag Energy Sensors
- Photoelectric Sensors
- Proximity Sensor

Motion and Robotics

- Inverters
- Robotics
- Servo & Drives



ELECTRICAL DISTRIBUTION & PROTECTION

Circuit Protection & Circuit Breakers

- ACB, MCB and MCCBs
- RCCB and RCBOS
- Auto Recloser
- Thermal Magnetic Circuit Breakers
- Motor Protection Circuit Breakers

Lightning and Surge Protection

Arc Flash Safety Devices

Switchboards Management System

- Power System Monitoring & Control
- Automatic Transfer Switches
- Switch Disconnectors
- Fuses and Fuse Holders HV & LV
- Distribution Boards

EXPLOSION PROOF PRODUCTS

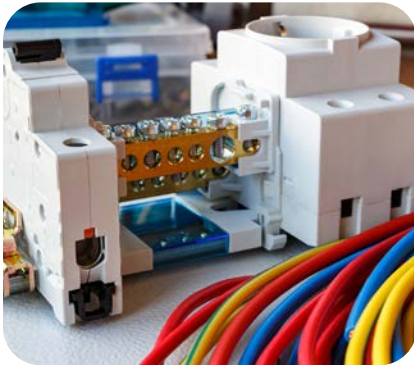
- Ex-Pilot Light, Push Button & Signalling
- Ex-proof Signal Beacons
- Ex-Alarm and Sirens
- Ex-Power Supply Unit
- Ex-Contactors
- Ex-Control Station
- Ex-Motor Starters

MOTOR CONTROLS & DRIVES

Motor Starters & Protection Components

- Variable Speed Drives (VSD)
- Soft Starters





ENERGY MANAGEMENT & POWER QUALITY

Energy & Power Measurement Devices

- Energy Meters
- Digital Power Meters
- Power Quality Meters
- Energy Monitoring
- Ammeters
- Voltmeters

ENCLOSURE & WIRING ACCESSORIES

Enclosures and Junction Boxes

- Enclosures
- Junction Boxes

Cable Glands

Terminals and Distribution Blocks

- Distribution Blocks
- Modular Terminal Blocks
- Customise Enclosure System & Components
- Customise Ex-enclosure System & Components

Cable Ties & Cable Accessories

PVC Slotted Trunking

WIRING DEVICES & ACCESSORIES

Industrial & Domestic Plugs & Sockets

- Enclosed Isolator Switches
- Wired Portable Boards IEC309 for Construction Site
- Cable Reel Extension Switch
- Sockets
- Weatherproof Plugs and Sockets

Motion Sensors (PIR)

CABLES & CABLING SYSTEMS

Electrical Cables

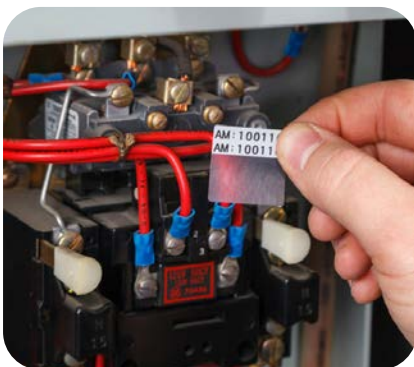
- Power, Control & Instrumentation Cables
- Medium Voltage Cables
- Fire Resistant & Flame Retardant Cables
- Customised Cables

Cables Management System

- HV & LV Cable Termination Kits
- HV & LV Cable Jointing Kits
- PVC Conduit Pipe & Accessories
- Stainless Steels Conduit Pipes & Accessories
- NPT Conduit Pipe & Accessories
- Cable Trays and Cable Ladder Systems
- Cable Cleat Solution for Short Circuit Protection
- Chemical Resistant Cable Ties
- Stainless Steel Cable Ties & Tools
- Electrical Tapes
- Self Fusing HV Rubber Tapes
- Mastic Tapes Conduit Clips and Clamps
- HV & LV Cable Lugs & Connectors
- Cable Slabs

Control Panel Solution

- Terminals and Ferrules
- Abrasive Protection Products
- Crimping Tools and Cable Cutters
- Wire Duct & Accessories
- Cable Ties and Tools
- Cable Accessories





ENERGY MONITORING SOLUTIONS



Consultation | Supply & Installation | Software Integration



ONE-STOP SOLUTION FOR YOUR ENERGY MONITORING NEEDS



CONSULTATION & SITE VISIT

Our experts will conduct a site visit to understand your current status.



SOLUTION PROPOSAL

Get a recommendation for the best solution based on site visit & budget.



SOLUTION IMPLEMENTATION

We work directly with brand partners, and provide installation and integration services.



MAINTENANCE SERVICES

Support doesn't end at installation. We provide after sales maintenance.



MONITOR

- Smart Building Monitoring
- Smart Utility Management

Electrical / Water / Gas / Air Con / Air Quality etc.

ANALYSE

- Automated Data Collection Software
- Energy / Water / Gas Consumption Report

ACTION

- Decarbonisation Program
- Smart Lighting
- Smart Control

MONITORING SOLUTION

SMART BUILDING
MONITORINGSMART UTILITY
MANAGEMENT

SMART BUILDING MONITORING

- Tracking and recording energy consumption data energy by area / floor level, etc.
- Provides real time and historical insights into energy consumption, allowing users to monitor trends, identify inefficiencies and identify opportunities for improvement.

SMART UTILITY MANAGEMENT

- Understanding energy, gas, and water usage metrics of your building.
- Enable further usage breakdown by tenants' consumption and facilitate tenant billing process.

APPLICATIONS



AGRICULTURE

Energy monitoring is important to the agricultural industry because it enables precise control of irrigation and equipment, to ensure sustainable practices and improved crop yield while minimising environmental impact and resource wastage.



COMMERCIAL BUILDINGS

Malls, foodcourts, and markets can benefit from smart energy monitoring solutions by using data to identify potential areas to streamline processes and save costs, and identify areas that require maintenance.



INDUSTRY & DORMITORY

Energy monitoring for dormitory owners to track tenant's electricity usage for billing purposes. Owners may also utilise insights to better manage their tenants and understand utility consumption.



EDUCATIONAL INSTITUTIONS

In Singapore, educational institutions have highlighted the importance of sustainable building practices. Energy monitoring solutions for these large buildings is essential to ensure they can reach the BCA Green Mark Platinum Level.



MANUFACTURING PLANTS

Improve operational efficiency, ensure equipment reliability, and reduce overall downtime when installing an industrial smart energy monitoring system. Benefits include managing costs and enhancing productivity.



LIGHTING



astro

Brownie
Architectural LED Lighting

CASAMBI

ceLux
Experience the Sky

EATON
CEAG products

EATON
Crouse-Hinds series

ENDO
LIGHTING CORP.

ERCO

SYN IWASAKI

Luci

MAXSPID
SINCE 1978

ModuleX

NIKON

PHILIPS

PURALUCE
Tuscany Light

SANS SOUCI

TARGETTI

Supply & Installation | Smart Lighting Integration | Lighting Design | Lux Simulation | Rendering

WHAT WE DO

SUPPLY

- We offer a wide range of LED products, switches, and controls from the world's leading brands

CONSULT

- Our lighting team has years of experience in the industry, and can advise on best fit solutions for all requirements
- Learn about the latest government grants & subsidies from the experts on our team

TEST & COMMISSION

- Programming, testing, and commissioning for smart lighting systems

Lighting for a **better** tomorrow

As a pioneer of the LED upgrading movement in Singapore, Lim Kim Hai Electric now offers even more lighting solutions to help your organisation become more energy efficient, reducing energy wastage and lowering costs.

50+

YEARS EXPERIENCE

170+

PROJECTS COMPLETED

12

LIGHTING TEAM MEMBERS

LED & ENERGY EFFICIENT LIGHTING

Supply of LED fixtures and lamps including:

- Tubes
- Highbays
- Downlights
- Battens
- Street Lamps



SMART LIGHTING SOLUTIONS

- Smart controls & dimming for maximum energy efficiency
- Integration with IOT infrastructure for a smart building & asset management system
- Convert any device to a smart fixture with easy to install modules



HUMAN CENTRIC LIGHTING

- Lighting with dimmable, colour tuning LEDs that automatically adjust to human circadian rhythm
- Occupants feel more energised and less stressed, improving overall productivity
- Gain up to 2 points for Green Mark BCA Certification



HAZARDOUS AREA LIGHTING

- Hazardous rated luminaires to contain sparks, preventing ignition of fumes
- Applicable to the petrochemical, oil, refinery, and storage industries
- Certified explosion-proof exit lights

APPLICATIONS



COMMERCIAL



INDUSTRIAL



INFRASTRUCTURE



INSTITUTION



RESIDENTIAL



VISUAL SAFETY



Safety Signs are crucial in preventing injury and ensuring stakeholders are well aware of possible dangers, as well as hazards ahead in certain situations and/or environments.



LABEL PRINTERS

From handheld and portable to high volume and high resolution color, Brady offers a full line of printers to suit all of your on-demand identification needs. These label makers are designed to print on a wide range of industrial materials to ensure you have long lasting identification in every application.



SAFETY SIGNS & LABELS

We offer more than 8,000 different pre-made signs for safety, maintenance and facility identification. The signs are compliant with the latest standards and regulations, and designed to withstand the harshest industrial environments.



CUSTOMISED PIPE & VALVE IDENTIFICATION

Brady's high performance and customizable pipe markers allow you to easily identify pipe contents and flow direction that keeps your facilities safe and compliant. Pipe marker are suited for various industries such as marine, chemical, oil & gas, food & beverage.



CHEMICAL COLOR LABELS PRINTERS

With Epson's ColorWorks, you can create full color GHS compliant labels on synthetic materials that are waterproof, smudge-proof & alcohol and chemical resistant. With reliable and high-speed printing capabilities, these printers ensure that your GHS-compliant labels are produced quickly and accurately.



WIRE & CABLE MARKER

Desktop / portable wire & cable labelling printers are essential tools for technicians and production team. These printers are easy to use and have a wide range of available label materials and built-in app for creating wire and cable labels on-site and on-demand.



FLOOR MARKING

We are distributing a wide range of floor tapes with easy installation, great durability and leaves no residue behind upon removal. The industrial grade floor tape can withstand industrial brush scrubbers, forklifts, truck traffic, etc.



WORKPLACE SAFETY



The process of protecting employees from work related illness and injury.



LOCKOUT TAGOUT (LOTO) SOLUTIONS

Brady's LOTO solutions include a range of lockout devices, safety padlocks, tags, and labels. These products are engineered to comply with OSHA regulations and help prevent accidental energy start-ups, ensuring the safety of workers and contractors. Elevate your safety standards with Brady – where reliability meets peace of mind.



ABSORBENTS & SPILL CONTAINMENT (SPC)

When a spill occurs, having a proper spill control program that enables a quick and effective response not only helps to protect the environment, but also supports a safe and productive workplace for your employees. We offer universal absorbents, oil-only absorbents and chemical absorbents.



MISSION CRITICAL COMMUNICATION

Whether it's communications that save lives or information that keeps a business moving, two way radios are built to get the message through efficiently. Motorola Solutions offers innovative, business-ready solutions in durable devices that allow first responders to stay connected in the toughest conditions. With an open app ecosystem on the Android platform, software ranging from security to analytics and virtual assistants can empower your team to ensure their best is always on.



MOBILE COMMUNICATION DEVICES (ZONE 1/21)

In potentially explosive atmospheres, Ex-protected communication devices are mandatory. i.safe MOBILE phones, smartphones and tablets are, among other things, certified according to ATEX and approved for Zone 1 for gases and Zone 21 for dust. In addition, the devices provide other internationally relevant explosion protection approvals such as IECEx, CSA, EAC, etc.



AUTOMATED LIGHTNING RISK ALERT SYSTEM

Our Automated Lightning Risk Alert System have been installed in more than 500 location sites covering Singapore and overseas markets. It is designed based on NEA Singapore or other lightning mapping service provider.



GAS DETECTION SYSTEM

Crowcon offers a wide range of industrial gas hazards with single gas and multigas monitors for personal monitoring and portable safety applications. With a wide range of sizes and complexities, you can select the right solution depending on the number and types of gas sensors you need.



PERSONNEL SAFETY



All accidents are preventable. PPE protects its user against any physical and internal harm in a hazardous workplace environment. The objective is to minimize or completely avoid any injury or damage caused by a workplace accident.

The protective gear guards its user's head, eyes, ears, respirator, body, hands, and feet against any risks.

ONE-STOP SOLUTION FOR YOUR PERSONAL SAFETY NEEDS

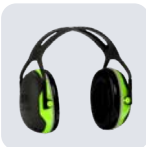
EYE PROTECTION

Safety Eyewear,
Safety Goggles



HEARING PROTECTION

Earmuff, Earplug



HEAD PROTECTION

Hard Hat



RESPIRATOR PROTECTION

Disposable / Reusable
/ PAPP



WE ARE 3M CERTIFIED FIT TESTER

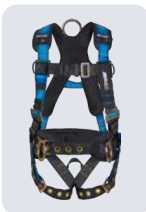
HAND PROTECTION

Mechanical /
Chemical / Arc Flash
Protection Gloves



FALL PROTECTION

Working at height
>1.8m or more



PROTECTIVE CLOTHING

Protective Coverall /
Arc Flash Suit



FOOT PROTECTION

CE EN 20345:2011 (Europe
Standard) / SS513
(Singapore Standard)





SAFETY SERVICES

Lim Kim Hai Electric has a team of experienced safety specialists who are certified to conduct respiratory and ear fit tests. Fit Testing can be conducted on-site and a minimum transportation fee would be imposed for groups below 5pax.

Contact us at customerservice@limkimhai.com.sg to make an appointment.



QUALITATIVE FIT TESTING (QLFT)

Qualitative fit test (QLFT) methods rely on a taste, smell or irritation from the test agent. Safety Managers are reminded to request for an Authorised letter from the FIT tester's company before proceeding. Any FIT test conducted by non accredited companies may be subjected to be non compliant to Singapore Standards SS 548:2009.

Lim Kim Hai Electric is proud to be accredited by 3M Singapore. Our FIT test trainers are trained & qualified for their competency.



QUANTITATIVE FIT TESTING (QNFT)

Quantitative fit test (QNFT) methods generate a numerical assessment of respirator fit. Lim Kim Hai Electric is qualified to conduct Quantitative Fit Testing using PortaCount® Pro+. Our fit testers are trained and qualified for its competency. An ID card with 1-year validity will be issued after completing the quantitative fit test.



E-A-Rfit DUAL-EAR VALIDATION

3MTM E-A-Rfit™ Dual-Ear Validation System helps determine whether workers are receiving adequate protection from their hearing protector by measuring across 7 standard frequencies in under five seconds, providing a detailed report on the noise attenuation performance of earplugs or earmuffs and a pass or fail rating for each individual person based on the employee's Personal Attenuation Rating (PAR).



INDUSTRIAL SOLUTIONS



Our customised industrial enhancement worksite solutions are crafted to tackle the routine maintenance challenges faced in daily operations. Feel free to contact us at customerservice@limkimhai.com.sg to explore the best-fit solution for your specific needs..



3M VENTURECLAD™ INSULATION JACKETING SYSTEMS

Insulation needs protection whether it's in the great outdoors or running through a chemical exposure area. 3M™ VentureClad™ Insulation Jacketing Systems have a multi-ply laminate construction that doesn't just provide physical protection as an insulation wrap, it also offers an absolute vapor barrier.

In addition, an extreme service temperature range makes these tapes suitable for most environments. Yet even while offering all this protection as a pipe insulation wrap or HVAC insulation wrap, rolls are still light enough for installers to carry to the site without lifting equipment.



MILWAUKEE CORDLESS POWER TOOLS SOLUTION

Milwaukee Electric Tool Corp. is an industry-leading manufacturer and marketer of heavy-duty, portable electric power tools and accessories for professional users worldwide.

With its latest in battery technology, its cordless tools deliver unparalleled performance, providing the freedom to move and work without the constraints of cords. From powerful drills and impact drivers to precise saws and grinders, their cordless lineup is designed for professionals and enthusiasts alike.



SS563 COMPLIANCES EMERGENCY EXIT & LUMINAIRES

Designed for Zone 1, 2, 21 and 22 hazardous locations, these EXIT and EXIT2 LED exit signs from Eaton's Crouse-Hinds Division feature long-life LEDs, intrinsically safe circuits, and an IP66 rating. These exit signs are ideal to denote escape routes and exits in IEC explosive atmospheres.

SCDF has now enforced that all Emergency self-contained luminaires and EXIT lighting including for hazardous application must comply with SS563 part 1 & 2 compliances.



SS563 Part 1 & 2: 2010 (2017) IEC/EN 60598-2-22 Certified

*Comply with Regulatory Requirement of SCDF Table 11a (Item 14 & 15)



PERMA AUTO LUBRICANT SYSTEMS

With Perma automatic lubrication systems, the lubricant is discharged into the lubrication point at the right time, in the required amount and optimal quality. No mixing of lubricants occurs, because only the lubricant from the lubrication system is applied to the lubrication point.



OMRON LOGISTICS AND WAREHOUSE AUTOMATION SOLUTIONS

The logistics industry involves consumer-related and operational challenges. Consumers want fast, low-cost delivery and the full availability of options, while warehouses experience labor scarcity, limited space, and the need to ensure accuracy. Omron's automation in pallet moving, order picking, palletizing and tote moving can help businesses to tackle their everyday challenges.



AXZON HEAT AND MOISTURE DETECTION

Axzon easy to install, battery free and wireless sensors that monitor critical power transmission and distribution equipments such as switchgears, transformers, VFD and plant equipments in real time. Be alerted in advance before failure strikes. Reduce operating expenses via early diagnosis and repair planning.



3M TERMINATION AND JOINTING KITS

3M termination and jointing kits decrease installation time and withstand harsh climates and environments. 3M cold shrink technology also enable cable splices installation and terminations quickly and efficiently, without special equipment or hot work permits.



3M CABLE JACKET REPAIR SOLUTIONS

3M Electrical Tapes are a robust solution for repairing cable jacket damages. Their tape repair procedures fit PVC and rubber cables for low and medium voltage. They're convenient for work in confined spaces and are a durable and cost effective solution for both temporary and permanent cable maintenance.



3M ABRASIVES FOR INDUSTRIAL MAINTENANCE & REPAIR

From grinding and sanding to polishing and finishing, 3M abrasives are designed to deliver consistent and superior results. Whether you're in manufacturing, automotive, or construction, rely on 3M Abrasives to elevate your processes and achieve the quality results you demand. Choose 3M for abrasives that set the standard for precision and efficiency in surface preparation and finishing.



3M RE-ENTERABLE ELECTRICAL INSULATING RESIN

Various electrical components are installed in enclosures and located outdoors exposed to sun and rain which over time may degrade and the seal of the box may be compromised. We offer electrical insulating resin which is useful for sealing, electrical insulation and provide mechanical protection. The multi-purpose, moisture-sealing resin bonds to nearly all cable jackets.



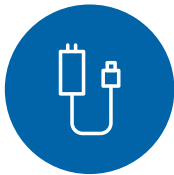
EV CHARGING SOLUTIONS



Contact us for an on-site consultation without obligation.



ONE-STOP SOLUTION FOR YOUR ELECTRIC VEHICLE (EV) NEEDS



EV CHARGER SUPPLY

We supply the best value electric vehicle chargers (EVC) from reliable partners to ensure safe and smooth charging experience.



EV CHARGER INSTALLATION

We offer installation services by Certified Electrical installers, with endorsement by LEW to ensure the charging infrastructure is aligned with Singapore rules and regulations.



MAINTENANCE SERVICES

Support doesn't end at installation. We provide after-sales maintenance services to help your EVC system run with maximum up time and in good conditions.



EV CHARGING SOFTWARE

We provide the complete suite of EVC infrastructure which includes charging management systems and cost effective secured payment gateway solution.

APPLICATIONS



OFFICES



COMMERCIAL



INDUSTRIAL



RESIDENTIAL

SCOPE OF WORKS



Commercial & Office

- No Obligation Site Survey
- Installation Requirement
- Available Spare Electrical Supply Review
- Project Proposal
- Installation Management
- Testing & Commissioning
- *CMS/Payment Gateway Solutions
- *Inspection & Maintenance

Residential

- No Obligation Site Survey
- Installation Requirement
- Available Spare Electrical Supply Review
- Installation Proposal
- Installation Management
- Testing & Commissioning
- *Inspection & Maintenance



Value Added Services*

- EV Car Park Lot Painting
- Car Park Pillar Wrapping
- Bollards
- Wheel Stopper
- Charger Branding
- Plinth
- Pedestal
- Usage Training/Demo

PROJECT REFERENCES

Please contact Alfred Lee at alfredlee@limkimhai.com.sg for EV charging project references.



NETWORK & PARTNERS



TOGETHER, WE CAN SERVE YOU BETTER

Cooperation is one of the keys to our success. Over the years, we have built a wide and strong network of partners and associates, with each of whom we enjoy a trusting and mutually supportive relationship. It is by working hand-in-hand that we are able to deliver the very best quality and service to our customers, each and every time.

3M

ABB

BRADY

brother
at your side

CASAMBI

CCG
CABLE TERMINATIONS

EATON
B-Line series

EATON
Bussmann series

EATON
CEAG products

EATON
Crouse-Hinds series

Electrix
INTERNATIONAL LTD

EPSON

IWASAKI

FIMER

FLUKE

Fuji Electric

FY M

GEWISS

:hager

HAWKE
International

Honeywell

IBOCO

IDEC

i.safe MOBILE

Kraus & Naimer
BLUE LINE switchgear

legrand

LIO FLEX

MAX

MAXSPID
SINCE 1978

MW
MEAN WELL

MEDC

MENNEKES

MIGHTY LINE
The Only Standard Bridge

Milwaukee

MOTOROLA
SOLUTIONS

NICHIFU

OMRON

PANDUIT

PATLITE

perma

PEPPERL+FUCHS

PHILIPS

PHENIX CONTACT

RS PRO

Schneider
Electric

SIEMENS

sindCon

Tai Sin

Telemecanique

TE
connectivity

Thomas & Betts
A Member of the ABB Group

Weidmüller

WERMA
SIGNALTECHNIK

and more...

(65) 6490 5000 | customerservice@limkimhai.com.sg | www.limkimhai.com.sg