



DECADES OF TRUSTED MRO DISTRIBUTION

ELECTRICAL | CONTROL | LIGHTING | SAFETY | INDUSTRIAL | EV CHARGING

COMPANY PROFILE





TABLE OF CONTENTS

OFFERINGS

ELECTRICAL & CONTROL.....	4
SMART UTILITY MANAGEMENT	6
LIGHTING.....	7
VISUAL SAFETY.....	8
WORKPLACE SAFETY	9
PERSONNEL SAFETY.....	10
INDUSTRIAL SOLUTIONS	11
EV CHARGING	12

VALUE ADDED SERVICES

VALUE ADDED SERVICES.....	13
FIT TESTING SERVICES.....	14
E-PROCUREMENT	15

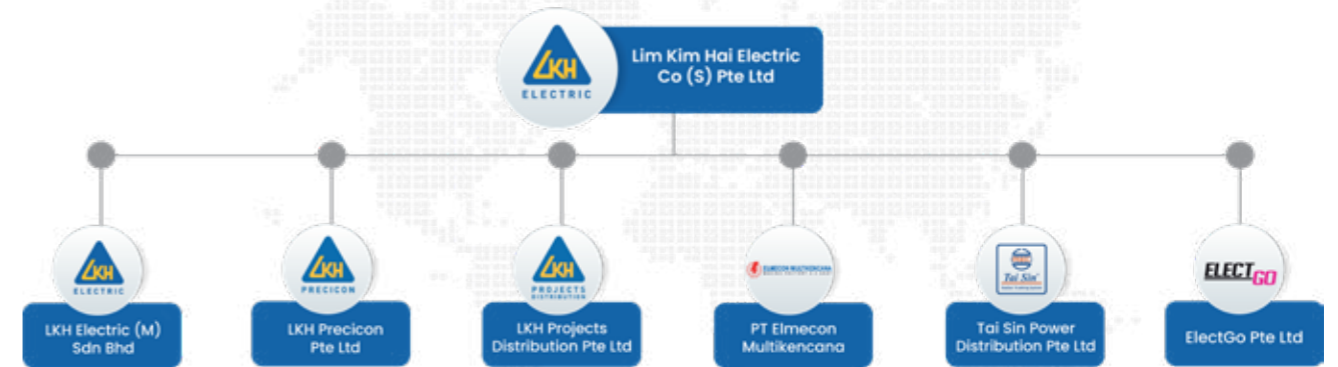
APPLICATIONS

INDUSTRIAL OUTDOOR	16
INDUSTRIAL INDOOR	18
SWITCH BOARD ROOM	20
WORKSHOP	22

PARTNERS

NETWORK & PARTNERS	24
--------------------------	----

LIM KIM HAI GROUP OF COMPANIES



Lim Kim Hai Electric Co (S) Pte Ltd MRO Products Distribution

Singapore's leading distributor of #electrical, #control, #lighting, #safety, maintenance solution and E-mobility products and accessories. Lim Kim Hai Electric demonstrates strength at every stage of the value chain, from knowledge-based sourcing, to a committed services team, and on-time delivery. #industrial #evcharging #beyonddistribution
www.limkimhai.com.sg

LKH Projects Distribution Pte Ltd Project Solutions Provider

Serving the construction project industry, LKHPD is an established solution provider delivering a range of services including #power-distribution, #datacommunications, #lighting, and electrical distribution solutions. #emf #electricaldistributionssystem
www.lkhpdp.com.sg

Tai Sin Power Distribution Pte Ltd Power Distribution Solutions

Tai Sin Power Distribution revolutionizes power distribution in Southeast Asia with #busbartrunkingsystem localized repair, replacement, and quality control tests from Singapore. #manufacturer #powermetering #thermalsensor #singaporequality
www.tspd.com.sg

LKH Electric (M) Sdn Bhd Power Distribution Solutions

Providing Malaysia's digital industries with a wide range of electrical and #power distribution solutions, LKH Electric (M) was re-established to be the extension of the Lim Kim Hai Group of Companies' presence in Malaysia. #automation #datacommunications #emf
www.limkimhai.com.my

LKH Precision Pte Ltd Industrial Automation Solutions

LKH Precision offers end-to-end solutions to companies in need of industrial #automation, and is a key partner in achieving #Industry4.0 transformation requirements to build smart and connected infrastructures. #connectivity #intelligence #smartmanufacturing #internetofthings
www.precision.com.sg

PT Elmecon Multikencana Industrial Automation Solutions

Founded in 1978, a pioneer of Indonesia's industrial #automation solutions, PT Elmecon leads the way as the primary distributor of internationally certified industrial automation and power distribution solutions. #indonesia4.0 #evcharger #powerdistribution
www.elmecon-mk.com

ElectGo Pte Ltd E-commerce Platform

An E-commerce platform offering a complete range of electrical components from trusted brand partners. ElectGo is synonymous with prompt delivery, excellent service, and reliable products. #b2becommerce #eprocurement #mroproducts #industrialsupply #industrialcomponents
www.electgo.com

Light Journey Specialist Lighting Department

A team of lighting specialists spread across LKHGC. With a keen interest in the intersection of spatial design and light, Light Journey serves as a technical solutions expert, and the primary intermediary between global lighting manufacturers and the local design & construction industry.
www.lightjourney.com.sg



ELECTRICAL & CONTROL



ELECTRICAL DISTRIBUTION & PROTECTION

- Circuit Protection & Circuit Breakers**
 - ACB, MCB and MCCBs
 - RCCB and RCBOs
 - Auto Recloser
 - Thermal Magnetic Circuit Breakers
 - Motor Protection Circuit Breakers
- Lightning and Surge Protection**
- Arc Flash Safety Devices**
- Switchboards Management System**
 - Power System Monitoring & Control
 - Automatic Transfer Switches
 - Switch Disconnectors
 - Fuses and Fuse Holders HV & LV
 - Distribution Boards



ENCLOSURE & WIRING ACCESSORIES

- Enclosures and Junction Boxes**
 - Enclosures
 - Junction Boxes
- Cable Glands**
- Cable Ties & Cable Accessories**
- PVC Slotted Trunking**
- Terminals and Distribution Blocks**
 - Distribution Blocks
 - Modular Terminal Blocks
 - Customise Enclosure System & Components
 - Customise Ex-enclosure System & Components



INDUSTRIAL CONTROL PRODUCTS

- Pilot Light, Push Button & Signalling**
- Industrial Ethernet Switches**
 - Selector Switches
 - Cam Switches
- Beacons and Sirens**
 - Signal Beacons
 - Alarm and Sirens
- Human Machine Interfaces (HMI)**
- Timers and Relays**
 - Relays
 - Timers
 - Smart Relays
- Power Supply Units**
- Control Stations**
 - Customised Control Stations



CABLES & CABLING SYSTEMS

- Electrical Cables**
 - Power, Control & Instrumentation Cables
 - Medium Voltage Cables
 - Fire Resistant & Flame Retardant Cables
 - Customised Cables
- Cables Management System**
 - HV & LV Cable Termination Kits
 - HV & LV Cable Jointing Kits
 - PVC Conduit Pipe & Accessories
 - Stainless Steels Conduit Pipes & Accessories
 - NPT Conduit Pipe & Accessories
 - Cable Trays and Cable Ladder Systems
 - Cable Cleat Solution for Short Circuit Protection
 - Chemical Resistant Cable Ties
 - Stainless Steel Cable Ties & Tools
 - Electrical Tapes
 - Self Fusing HV Rubber Tapes
 - Mastic Tapes Conduit Clips and Clamps
 - HV & LV Cable Lugs & Connectors
 - Cable Slabs



MOTOR CONTROLS & DRIVES

- Motor Starters & Protection Components**
 - Variable Speed Drives (VSD)
 - Soft Starters



ENERGY MANAGEMENT & POWER QUALITY

- Energy & Power Measurement Devices**
 - Energy Meters
 - Digital Power Meters
 - Power Quality Meters
 - Energy Monitoring
 - Ammeters
 - Voltmeters



EXPLOSION PROOF PRODUCTS

- Ex-Pilot Light, Push Button & Signalling
- Ex-proof Signal Beacons
- Ex-Alarm and Sirens
- Ex-Power Supply Unit
- Ex-Contactors
- Ex-Control Station
- Ex-Motor Starters



WIRING DEVICES & ACCESSORIES

- Industrial & Domestic Plugs & Sockets**
 - Enclosed Isolator Switches
 - Wired Portable Boards IEC309 for Construction Site
 - Cable Reel Extension Switch Sockets
 - Weatherproof Plugs and Sockets

Motion Sensors (PIR)

SMART UTILITY MANAGEMENT (ENERGY/ WATER/ GAS)



YOUR PATH TO SMARTER OPERATIONS & LOWER CARBON FOOTPRINT STARTS HERE

Empowering Energy & Sustainability Managers with Real-time Insights, Actionable Analytics, and Measurable Savings.



High and unpredictable utility bills?

Inefficiencies in facility energy performance?

Lack of visibility into energy usage across systems or sites?

Difficulty meeting ESG reporting and regulatory requirements?

We provide visibility, control, and strategic impact.

OUR SOLUTIONS



SMART UTILITY MONITORING

- ✓ Understand energy, water, gas consumption with an Smart Utility Monitoring System
- ✓ Automated tracking and recording energy, water and gas consumption data by area / floor level, etc
- ✓ Ease for ESG, Green Mark and internal audit.
- ✓ Provides real time and historical insights into energy, water and gas consumption, allowing users to monitor trends, identify inefficiencies and identify opportunities for improvement.

ONE-STOP SOLUTION FOR YOUR UTILITY MONITORING NEEDS



SITE VISIT

Our experts will conduct a site visit to understand your current status.



SOLUTION PROPOSAL

Get a recommendation for the best solution based on site visit & budget.



SOLUTION IMPLEMENTATION

We work directly with brand partners, and provide installation and integration services.



MAINTENANCE SERVICES

Support doesn't end at installation. We provide after sales maintenance.

LIGHTING



SOLAR STREET LIGHT

Integrated solar street lights with battery, solar panel and charger built into the luminaire. It brings light to areas without access to the electric grid, saves energy, is environmentally friendly and preserves landscape as no trenching for cabling is required.



EX-PROTECTED LIGHTINGS

Hazardous rated luminaires to contain sparks, preventing ignition of fumes. These products are applicable to petrochemical, oil refinery and storage industries. We offer ex-protected lightings, fittings and it's accessories.



LED & ENERGY EFFICIENT LIGHTING

These can be easily retrofitted into your existing fixtures. We supply tubes, bulbs, PLC lamps, MR16, downlight, battens, panels, high bay, low bay, floodlights, etc.

SMART LIGHTING SOLUTION

TRANSFORM YOUR BUILDING WITH SMART LIGHTING

Designed for Facility Managers & Building Owners Ready to Optimise Efficiency & Sustainability



- ✓ **Cost & Energy Savings** (up to 70% compared to fluorescent tubes)

*Further savings with smart control



- ✓ **Flexibility & Easy Installation** for Retrofitting, Future Growth, or Sudden Design Changes



- ✓ **Simplify Reporting and Consumption Processes**



- ✓ **Advance Sustainability Goals**



- ✓ **Enhanced Control & Features** for User Experience

! VISUAL SAFETY



Safety Signs are crucial in preventing injury and ensuring stakeholders are well aware of possible dangers, as well as hazards ahead in certain situations and/or environments.



LABEL PRINTERS

From handheld and portable to high volume and high resolution color, Brady offers a full line of printers to suit all of your on-demand identification needs. These label makers are designed to print on a wide range of industrial materials to ensure you have long lasting identification in every application.



CHEMICAL COLOR LABELS PRINTERS



WIRE & CABLE MARKER



SAFETY SIGNS & LABELS



CUSTOMISED PIPE & VALVE IDENTIFICATION



FLOOR MARKING



SS563 COMPLIANCES EMERGENCY EXIT & LUMINAIRES

WORKPLACE SAFETY



The process of protecting employees from work related illness and injury.



EX-PROTECTED COMMUNICATION SMART DEVICES (ZONE 1/21, 2/22)

In potentially explosive atmospheres, Ex-protected communication devices are mandatory. i.safe MOBILE phones, smartphones and tablets are, among other things, certified according to ATEX and approved for Zone 1 for gases and Zone 21 for dust. In addition, the devices provide other internationally relevant explosion protection approvals such as IECEx, CSA, EAC, etc.



AUTOMATED LIGHTNING RISK ALERT SYSTEM (ALRAS)



ADVANCED LIGHTNING PROTECTION SYSTEM (ALPS)



LOCKOUT TAGOUT (LOTO) SOLUTIONS



TWO-WAYS WALKIE-TALKIE RADIO



GAS DETECTION SYSTEM (FIXED & PORTABLE)



SORBENTS & SPILL CONTROL



PERSONNEL SAFETY



All accidents are preventable. PPE protects its user against any physical and internal harm in a hazardous workplace environment. The objective is to minimize or completely avoid any injury or damage caused by a workplace accident.

The protective gear guards its user's head, eyes, ears, respirator, body, hands, and feet against any risks.

ONE-STOP SOLUTION FOR YOUR PERSONAL SAFETY NEEDS

EYE PROTECTION
Safety Eyewear,
Safety Goggles

HEARING PROTECTION
Earmuff, Earplug

HAND PROTECTION
Impact / Mechanical
/ Chemical / Arc Flash
Protection Gloves

FALL PROTECTION
Working at height
>1.8m or more

HEAD PROTECTION
Hard Hat

RESPIRATOR PROTECTION
Disposable / Reusable
/ PAPR
WE ARE CERTIFIED FIT TESTER for
3M & DRÄGER

SELF-CONTAINED BREATHING APPARATUS (SCBA)
Voice Amplifier /
SCBA System / Cylinders

PROTECTIVE CLOTHING
Protective Coverall /
Arc Flash Suit

FOOT PROTECTION
CE EN 20345:2011 (Europe
Standard) / SS513
(Singapore Standard)



INDUSTRIAL SOLUTIONS



Our customised industrial enhancement worksite solutions are crafted to tackle the routine **maintenance challenges** faced in daily operations. Feel free to contact us at customerservice@limkimhai.com.sg to explore the best-fit solution for your specific needs.



MILWAUKEE CORDLESS POWER TOOLS

Milwaukee Tool is an industry-leading manufacturer and marketer of heavy-duty, portable electric power tools and accessories for professional users worldwide.

With its latest in battery technology, its cordless tools deliver unparalleled performance, providing the freedom to move and work without the constraints of cords. From powerful drills and impact drivers to precise saws and grinders, their cordless lineup is designed for professionals and enthusiasts alike.



3M INDUSTRIAL ELECTRICAL TAPES



3M CABLE JOINTS & TERMINATIONS



3M ABRASIVES FOR INDUSTRIAL MAINTENANCE & REPAIR



HENKEL LOCTITE THREADLOCKER & THREAD SEALER



AXZON HEAT AND MOISTURE DETECTION



PERMA AUTO LUBRICANT SYSTEMS

EV CHARGING



Please feel free to contact us at customerservice@limkimhai.com.sg for an on-site consultation without obligation.

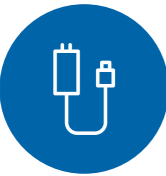


EV CHARGING DEMO STATION @ LIM KIM HAI BUILDING

Visit our AC & DC Chargers at the Lim Kim Hai Electric building @ Kallang 339 177.

Schedule an appointment with us at customerservice@limkimhai.com.sg for a live EV charging station demo session.

ONE STOP SOLUTION



EV CHARGER SUPPLY

Our EV charger has obtained the type approval under EVCA from the Land Transport Authority (LTA), ensuring compliance with regulatory standards and affirming its reliability.



EV CHARGER INSTALLATION

We offer installation services by Certified Electrical installers, with endorsement by LEW to ensure the charging infrastructure is aligned with Singapore rules and regulations.



MAINTENANCE SERVICES

Support doesn't end at installation. We provide after-sales maintenance services to help your EVC system run with maximum up time and in good conditions.



EV CHARGING SOFTWARE

We provide the complete suite of EVC infrastructure which includes charging management systems and cost effective secured payment gateway solution.

PROJECT REFERENCES



Scan to view or download our EV project references.

Feel free to contact our EV specialist, Alfred Lee at alfredlee@limkimhai.com.sg for an on-site consultation without obligation.



VALUE ADDED SERVICES

With strong expertise and experience, we are poised to serve all industries locally with confidence and commitment.



PRODUCTS INVENTORY

As the leading electrical material distributor in the market for more than six decades, customer satisfaction is always our top priority. We carry an inventory of more than 20,000 SKUs to support our customers with shortest lead time.



SOURCING & PROCUREMENT

We provide product sourcing & procurement support. With our extensive network in the industry, we are able to source the best fit products with manufacturers offering the best price options in supporting your needs.



INVENTORY MANAGEMENT

We support our customer by providing inventory management for committed orders based on mutual agreements. We keep stocks of critical parts and dispatch according to customers' project schedules.



CERTIFIED FIT TESTING

We go the extra mile to support our customers by providing certified fit testing for earmuffs, earplugs, and respirators. This ensures proper protection and helps you choose the right PPE for maximum safety and compliance. Our fit testers are trained and authorised by 3M and Dräger.



SAFETY FIT TESTING

Lim Kim Hai Electric has a team of experienced safety specialists who are certified to conduct respiratory and ear fit tests. Fit Testing can be conducted on-site and a minimum transportation fee would be imposed for groups below 5pax.

Contact us at customerservice@limkimhai.com.sg to make an appointment.



QUALITATIVE FIT TESTING (QLFT)

Qualitative fit test (QLFT) methods rely on a taste, smell or irritation from the test agent. Safety Managers are reminded to request for an Authorised letter from the FIT tester's company before proceeding. Any FIT test conducted by non accredited companies may be subjected to be non compliant to Singapore Standards SS 548:2009.

Lim Kim Hai Electric is proud to be accredited by 3M Singapore. Our FIT test trainers are trained & qualified for their competency.



QUANTITATIVE FIT TESTING (QNFT)

Quantitative fit test (QNFT) methods generate a numerical assessment of respirator fit. Lim Kim Hai Electric is qualified to conduct Quantitative Fit Testing using PortaCount® Pro+. Our fit testers are trained and qualified for its competency. An ID card with 1-year validity will be issued after completing the quantitative fit test.



E-A-Rfit DUAL-EAR VALIDATION

3MTM E-A-Rfit™ Dual-Ear Validation System helps determine whether workers are receiving adequate protection from their hearing protector by measuring across 7 standard frequencies in under five seconds, providing a detailed report on the noise attenuation performance of earplugs or earmuffs and a pass or fail rating for each individual person based on the employee's Personal Attenuation Rating (PAR).



E-PROCUREMENT SOLUTION



ELECTGO

DIGITALIZE YOUR PROCUREMENT PROCESS WITH E-PROCUREMENT SOLUTION



MAKE PURCHASING EFFORTLESS

In today's fast-paced business environment, digitalizing your procurement process is no longer an option but a necessity. ElectGo, a subsidiary of Lim Kim Hai Group of Companies (LKHGC), offers cutting-edge eprocurement solutions tailored to meet the unique needs of businesses looking to enhance efficiency and reduce procurement costs.

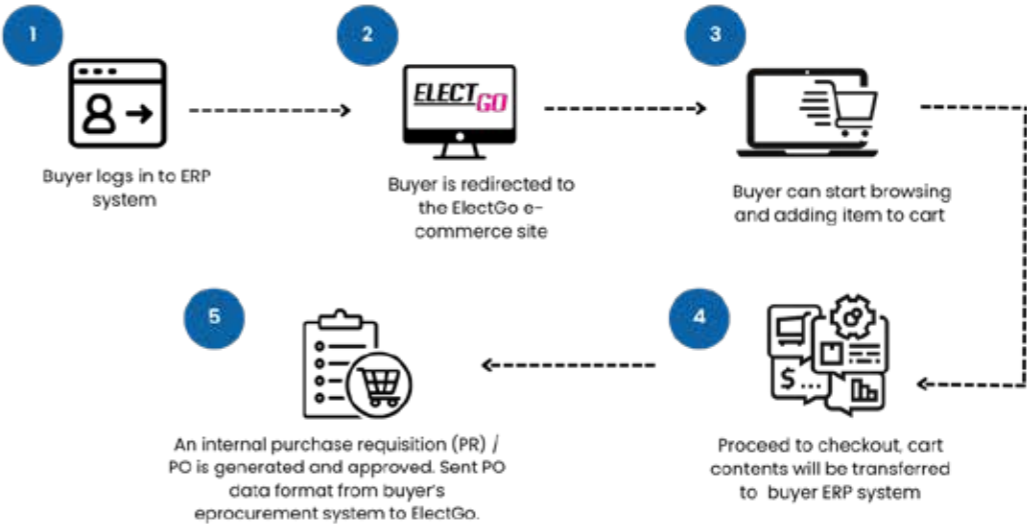
Our solutions include the innovative Punchout system and Credit Term options, ensuring seamless integration with your existing systems and processes.

PUNCHOUT CATALOG



- ✓ **Seamless Integration** : Integrates with procurement systems for easy access to supplier catalogs
- ✓ **Real-time Data** : Provides up-to-date product information and pricing.
- ✓ **Streamlining Process** : Allows browsing and cart transfer directly to procurement systems.
- ✓ **Enhancing Control** : Ensures purchases comply with approved suppliers and contracts.
- ✓ **Improve Efficiency** : Reduces manual entry and speeds up procurement.

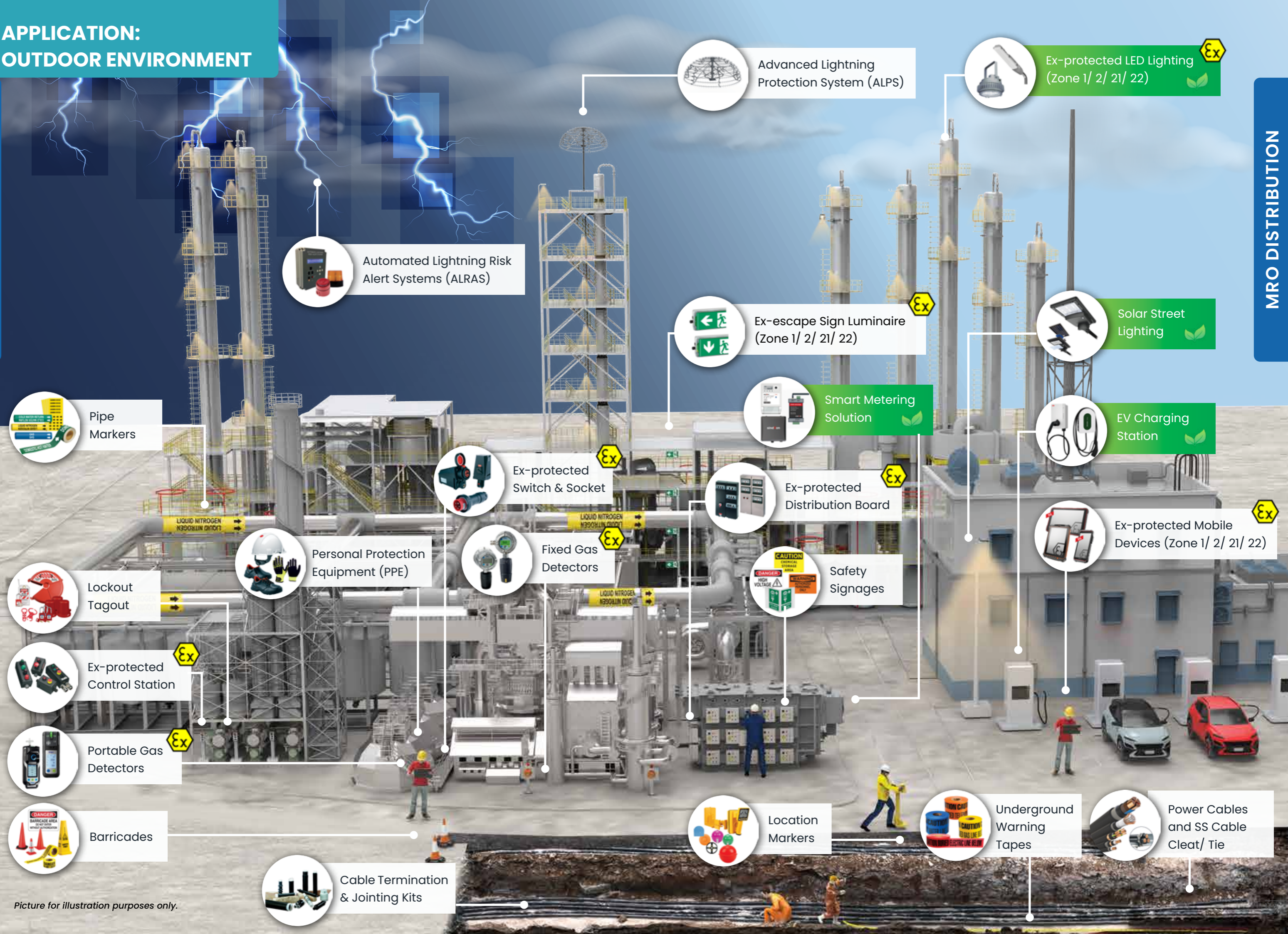
WE CAN INTEGRATE WITH THESE PROCUREMENT SYSTEMS



APPLICATION:
OUTDOOR ENVIRONMENT

MRO DISTRIBUTION

MRO DISTRIBUTION



Advanced Lightning
Protection System (ALPS)



Ex-protected LED Lighting
(Zone 1/ 2/ 21/ 22)



Automated Lightning Risk
Alert Systems (ALRAS)



Ex-escape Sign Luminaire
(Zone 1/ 2/ 21/ 22)



Solar Street
Lighting



Pipe
Markers



Smart Metering
Solution



EV Charging
Station



Ex-protected
Switch & Socket



Ex-protected
Distribution Board



Ex-protected Mobile
Devices (Zone 1/ 2/ 21/ 22)



Lockout
Tagout



Personal Protection
Equipment (PPE)



Fixed Gas
Detectors



Safety
Signages



Ex-protected
Control Station



Portable Gas
Detectors



Barricades



Location
Markers



Underground
Warning
Tapes



Power Cables
and SS Cable
Cleat/ Tie



Cable Termination
& Jointing Kits

APPLICATION:
INDOOR ENVIRONMENT

MRO DISTRIBUTION

MRO DISTRIBUTION



Pipe Markers



Safety Signages



Portable Gas Detectors



Chemical Suit & Airline System



Ex-protected LED Lighting
(Zone 1/ 2/ 21/ 22)



Ex-escape Sign Luminaire
(Zone 1/ 2/ 21/ 22)



Ex-protected Mobile Devices
(Zone 1/ 2/ 21/ 22)



Lockout Tagout



Fixed Gas Detectors



Chemical Resistant Label Printer



Industrial Floor Tapes



Spill Containment Products (SPC)

APPLICATION: SWITCH BOARD ROOM

MRO DISTRIBUTION



Energy Savings
LED Lighting



Power
Cables



Power Monitoring
Electronic Circuit Breaker



Safety Signages



VeriSafe™ Absence of
Voltage Testers (AVTs)



Insulation
Mat



Switches



Cable Tie, Cable Lug/
Terminal/ Ferrules,
Wiring Duct, Conduit



Cable Marker/
Identification



Arc Flash
Suit



ACB, MCCB, MCB, ELCB, Breaker
Accessories, Contactor, Surge
Arrestor Protection Device, Fuses



Personal Protection
Equipment (PPE)

MRO DISTRIBUTION

APPLICATION: WORKSHOP

MRO DISTRIBUTION

MRO DISTRIBUTION



Smart Lighting System



Fastening Power Tools



Customizable Tool Organizer System



Indoor Air Quality (IAQ)



Workbenches



Drill and Driving Power Tools



Cutting and Grinding Power Tools



Personal Protection Equipment (PPE)



Fit Test Services



Abrasives Products



Wire & Cable Labelling Printers



Milwaukee Storage Solution





NETWORK & PARTNERS



LIM KIM HAI ELECTRIC @ KALLANG

☎ (65) 6490 5000

📍 Lim Kim Hai Building,
53, Kallang Place,
Singapore 339 177

✉ customerservice@limkimhai.com.sg

LIM KIM HAI ELECTRIC @ JURONG ISLAND

☎ (65) 6265 7138

📍 3 Sakra Road,
#02-04 Oasis@Sakra,
Jurong Island,
Singapore 627878

✉ customerservice@limkimhai.com.sg